



FOR NEW EQUIPMENT SALES, CALL
866.966.2969
TO SPEAK WITH AN ALTEC REPRESENTATIVE
or visit us online at altec.com

**Altec**
TELESCOPIC CRANE

STANDARD FEATURES

- Altec LMAP (Load Moment & Area Protection) System with Smart-Zone Rating to Determine Load Capacity Based on Outrigger Positions
 - » Rated Capacity Limiter
 - » Displays: Boom Length, Boom Angle, Load on Hook, Percent of Rated Capacity
 - » Operator Defined Audible Alarm Set-Points for Boom Angle, Length and Rotational Position
- E-Series Electric Over Hydraulic Crane Control System
- Dual Entry 20° Tilt Cab with Heater and A/C
- Outrigger Boom Interlock System
- Outrigger Motion Alarm
- Winch Drum Rotation Indicator
- Anti-Two Block Device
- Winch and Boom Telescope Control at Load Hook Stow Point
- Hydraulic Oil Cooling System
- 15,000 lb 2-Speed High-Performance Piston Winch
- Rotation Resistant Wire Rope

OPTIONS

- ANSI A92.2 Compliant Aerial Operation Package
 - » 2-Man, Steel Platform Fixed, 800 lb (362.8 kg) Capacity, or Rotating, 1,200 lb (544.3 kg) Capacity
 - » Radio Remote Controls
 - » Fall Protection
- Platform Hydraulic Tools & Intensifier Package
- 1-Piece 31 ft (9.4 m) Jib
- 2-Piece 55 ft (16.7 m) Offsetable Jib, 31 ft (9.4 m) Retracted
 - » 0, 15, and 30 degree offset positions
 - » Integrated Jib-tip Wheel for Offsetting Jib
 - » Quick Pinning Offset Installation System
- 15,000 lb 2-Speed Auxiliary Hoist
- Hydraulic Tool Circuit at Tail Shelf

Recommended equipment, available through Altec Supply, include wheel chocks and outrigger pads.

CRANE SPECIFICATIONS

Maximum Lift Capacity	90,000 lb (40,823 kg)
Boom Length (5-Section)	127 ft (38.7 m)
Powered Sheave Height	135 ft (41.2 m)
Maximum Sheave Height with 2-Stage Jib	189 ft (57.6 m)
Stowed Travel Height	13.25 ft (4.04 m)
Vehicle Travel Length	39.9 ft (12.2 m)
Two Speed Winch Capacity	15,000 lb (6,803 kg)

3 Position Out-and-Down Outriggers

Full Span	24 ft (7.3 m)
Mid Span	17.9 ft (5.4 m)
Short Span	8 ft (2.4 m)
Control System	Electric Over Hydraulic

ASME B30.5 Compliant

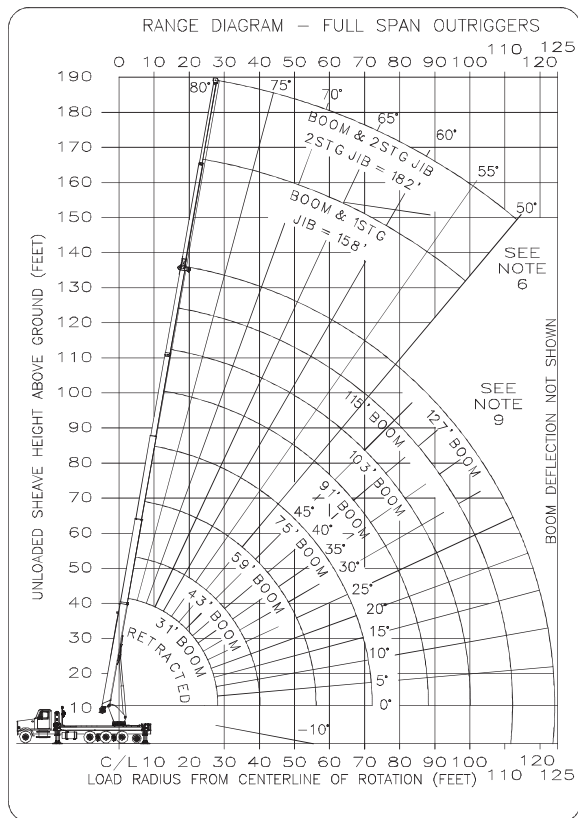
LOAD MOMENT AND AREA PROTECTION



The convenient menu navigation with an intuitive user interface displays load on hook, rated capacity percentage, boom length and angle, load radius, and operator-defined protection with audible alarms. Additionally, the AC45E comes standard with Smart-Zone Rating functionality, which uses the outrigger positions to determine where the machine has capacity for the load on hook. This provides an extra layer of safety to help prevent instability during asymmetric outrigger setups. While the display and user interface are unique to Altec, the system's hardware consists of common "off-the-shelf" components that were critically selected for their performance and serviceability.

UNIT		RECOMMENDED CHASSIS DIM				MINIMUM RECOMMENDED CHASSIS SPECIFICATIONS				
Model	Rear Axle	CA (in)	WB (in)	AF (in)	AS (in)	Front Axle Rating (lb)	Rear Axle Rating (lb)	GVWR (lb)	Frame Sec Modulus (in ³)	Frame RBM (in-lb)
AC45E-127S	Tandem w/ Pusher & Tag	212	299	140	54	20,000	52,000	72,000	consult factory	

LOAD CHART - FULL SPAN OUTRIGGERS



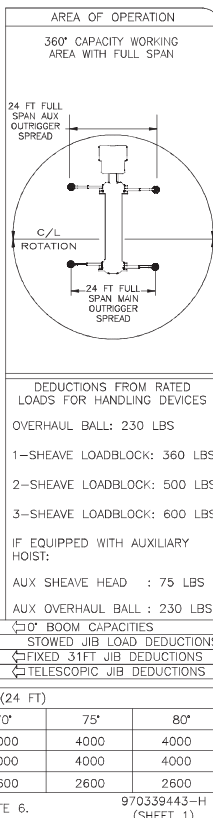
BOOM LOAD CAPACITIES IN LBS. WITH FULL SPAN OUTRIGGERS (24 FT)

LOAD RADIUS (FT)	31 FT BOOM	43 FT BOOM	59 FT BOOM	75 FT BOOM	91 FT BOOM	103 FT BOOM	115 FT BOOM	127 FT BOOM
7	90000	36000						
8	82100	36200						
10	71100	36500	35800					
12	62700	38700	36100	35500				
15	50800	39700	38100	35700	22000			
20	36200	36900	37300	33200	22000	17100	12850	
25	27400	28100	28600	28800	20700	17100	12600	10000
30		22300	22800	23000	18000	16800	12500	10000
35		17700	18200	18400	15900	14500	12400	10000
40			14500	14800	14200	12700	11400	10000
45			11800	12200	12100	11200	10000	9050
50			9800	10100	10100	9900	8800	8100
55				8500	8500	8500	8000	7200
60				7200	7200	7200	6300	6400
65				6100	6100	6200	5700	5700
70				5100	5200	5300	5400	5100
75					3300	4500	4600	4450
80					2600	3800	3950	4000
85					1700	3200	3400	3400
90						2800	2850	2900
95						2000	2400	2450
100						1900	2000	2050
105							1600	1700
110							1250	1350
115								1050
120								750
0	22000	0	14000	0	8200	0	4700	0
	500	415	300	280	250	210	190	150
	1000	770	560	420	350	315	280	250

NOTE: RATINGS ABOVE THE HEAVY LINE ARE BASED ON STRUCTURAL COMPETENCE AND NOT ON MACHINE STABILITY

JIB LOAD CAPACITIES (LBS) FOR ALL BOOM LENGTHS. JIB CAPACITIES ARE FOR FULL SPAN OUTRIGGERS (24 FT)	50°	55°	60°	65°	70°	75°	80°
LOADED BOOM ANGLE							
FIXED 31 FT JIB	1300	1800	2400	3400	4000	4000	4000
TELESCOPING JIB							
RETRACTED 31 FT JIB	1000	1700	2400	3400	4000	4000	4000
EXTENDED 55 FT JIB	700	1300	1800	2500	2600	2600	2600

* DO NOT OPERATE JIBS BELOW THIS ANGLE UNLESS BOOM IS FULLY RETRACTED. SEE NOTE 6.



Note 1: When jib is erected, boom must be fully retracted before lowering below minimum boom with jib angles. Retracted boom with jib has no lifting capacity below a 50 degree angle with full span outriggers and below a 65 degree angle not shown on jib load rating chart.

Note 2: Do not lower boom into this area, instability may occur. Hydraulic pressure may not allow raising the boom without retracting boom first.

Charts published herein are intended to be a guide only and should not be construed to warrant application for lifting purposes. Consult supplied operation manual for further details.

E-SERIES CONTROLS

The E-series control system is a standard feature on the AC45E. Included is a redesigned swing system and state of the art CAN based hydraulic control system. This system ensures that motion starts and stops are extremely smooth with unparalleled meterability and swing control as well as best-in-class multifunction performance.



DUAL ENTRY CAB

Altec's patented dual entry cab provides safe access /egress throughout the entire range of rotation. The 20° tilt feature maximizes the viewing spectrum on the job site.



LOWER WINCH AND BOOM TELE CONTROL

The AC45E includes winch control at the hook stowage point, which allows for one person to safely and easily stow the load block. Additionally, boom telescope control at the hook stowage point is also standard, allowing for the boom stow length to be easily adjusted before roading.



866-966-2969
sales@altec.com

AIOSAC45E127S-521-v2

33 Inverness Center Parkway
Birmingham, AL 35242
Fax 205.449.4774
www.altec.com

For more complete information on Altec products and services, visit us on the web at www.altec.com.

© 2021 Altec Inc
All Rights Reserved

Material and specifications are subject to change without notice. Featured units in photos may include optional features. Please contact an Altec representative for all available options. Charts published herein are intended to be a guide only and should not be construed to warrant application for lifting purposes. Consult supplied operation manual for further details.

Altec® and the Altec logo are registered trademarks of Altec Inc in the United States and various other countries and may not be used without permission.

